

Bramante

Hollow segmented cross section viscose fibre with enhanced properties

Offers a big surface area and good absorption characteristic.
Hollow structure when wet, collapsed when dry

Typical properties:

Air Dry Tenacity: 15cN/tex

Air Dry Extension: 25-30%

Water retention: 220% - 360%;

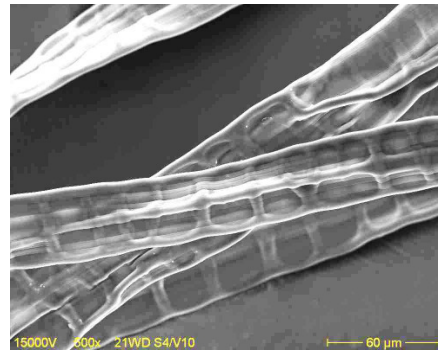
Color pick-up: about 3x standard viscose

Processes: wetlaid, airlaid, carded webs

Availability:

Decitex	Staple (mm)	Lustre
2.1	30 / 40 4-12 (wet / dry)	Dull
3.3	30 / 40 4-12 (wet / dry)	Dull

Other dtex / staple length are available on request.



Bellini

Extreme flat cross section viscose fibre

Strength enhancement in paper/wetlaid applications through extreme flat cross section.

Typical properties:

Air Dry Tenacity: 14cN/tex

Air Dry Extension: 18%

Width/thickness ratio 1:10 to 1:20

Water retention: 120-180%

Processes: paper, wetlaid

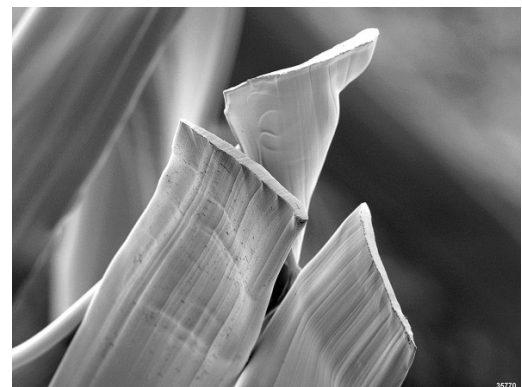
Fiber has a self-binding effect, so that 100% webs can be formed.

Fiber can be modified through refining for targeted paper properties.

Availability:

Decitex	Staple (mm)	Lustre
2.1	4-12 40	Highly glossy

Other dtex / staple length are available on request.



For more information about our products please email to: nonwovens@kelheim-fibres.com or call Germany +49-9441-99423. Please visit also our website www.kelheim-fibres.com . 03/2010

The above data are for the purpose of informing about our products and their applications and are based on current knowledge. They have hence not the meaning to guarantee certain properties or suitability for special applications. Danufil Trademark and Patents are property of KELHEIM FIBRES GmbH Germany.